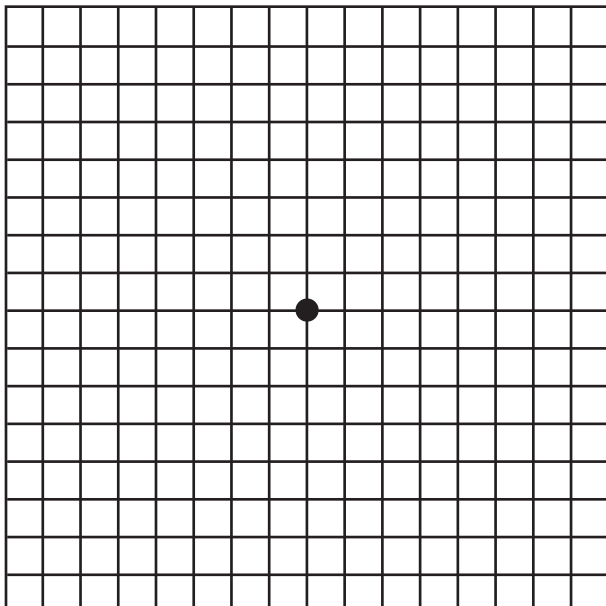


# AMSLER GRID TEST

The Amsler Grid can be an important indicator of diseases of the retina. It is not a substitute for regularly scheduled eye exams or tests.

Directions:

1. Do not remove glasses or contacts that you normally wear for reading.
2. Hold the grid at a normal reading distance in a well-lit room.
3. Cover one eye with your hand and focus on the black dot in the center with your uncovered eye. Repeat with the other eye.
4. If you see any distorted lines, blurring or blank spots, you should contact your eye care provider immediately.



**Retina Consultants**

*of Southwest Florida®*

(800) 282.8281

[www.eye.md](http://www.eye.md)